



**Completed Projects**



Amrapali Plaza, Vaishali Circle



Crossroad, Vidhyadhar Nagar



Vardhman Apartments, Banipark



Western Heights, Shyam Nagar



Vardhman Residency, Ajmer Road



Arihant Enclave, Ajmer Road

**Upcoming Project**

*Giving life to your dreams...*



Premium Residential Apartments



Dr. W. Datta 0141-2211011, 9220111611



**Arihant Buildtech**  
 Corporate Office: 67, Tagore Nagar Ajmer Road  
 Site Office: 116,156, Kanak Vihar, Ajmer Road, Jaipur

**Promoters :**  
**Vimal Nahata** 94140 72115  
**Amit Kotecha** 94133 69678  
**Tarun Nahata** 98292 94342  
**Kuldeep Kotecha** 94141 16655

**Architect:**  
**Space Grid**  
 93149 18766  
 93145 10603



Disclaimer : This Brochure is purely conceptual and not a legal offering. Further the Promoters/Architect reserve the right to add/delete/ modify any details/specifications/ elevation mentioned herein.





### A charming blend of classic Indian living with the best of modern amenities

Arihant Residency offers efficient design to raise your lifestyle to a new level of comfort, with a view to redefine urban lifestyle. All apartments at Arihant Residency, Kanak Vihar are architecturally designed in an aesthetical and functional style.

Arihant Residency offers a charming blend of classic Indian living with the best of modern amenities to ensure warm and cozy living. Each apartment offers a unique experience of the "comfortable Lifestyle" 'Tasteful interiors' and the best amenities defining true style. The Apartments are so well appointed which allows maximum natural light, making your home airy and as good as the exterior. You'll love the relaxing bathrooms and spacious bedrooms all in harmony to create a relaxed feel throughout your home.



**ARIHANT**  
RESIDENCY



Planned Spaces for your dream homes

1<sup>st</sup>, 2<sup>nd</sup>, 3<sup>rd</sup> FLOOR PLAN



A touch of living comfort & utility



No.	Saleable Area
1	1515 Sq. Ft.
2	1110 Sq. Ft.
3	1100 Sq. Ft.
4	1515 Sq. Ft.



**APARTMENT FEATURES**

- Premium Class Flooring of Marble / Vitrified Tiles
- POP finish on wall & ceiling with decorative cornices & beadings
- Premium Quality Acrylic Distemper paint on wall & ceiling
- Satin Finish Paint on doors & windows
- Ample Car Parking

**WOOD WORK:**

- Wooden door window frames
- Wooden Windows having Glass & Wire Mesh panels with safety grills
- Tough water proof ISI mark 30 mm flush doors
- Well designed main door of 35 mm thickness
- Designer fittings on doors & windows

**KITCHEN:**

- Black Granite working counters
- Stainless Steel Sink
- 2' tiles above the counter
- Provision for Geyser in Kitchen
- Provision for Aqua Guard & Modular Kitchen

**DESIGNER TOILETS:**

- Designer Ceramic tiles of premium brands in toilet upto 7' height on walls

- Anti-skid ceramic tiles on floor
- C.P. fittings & accessories of premium brand
- Designer Sanitary Ware

**ELECTRICAL:**

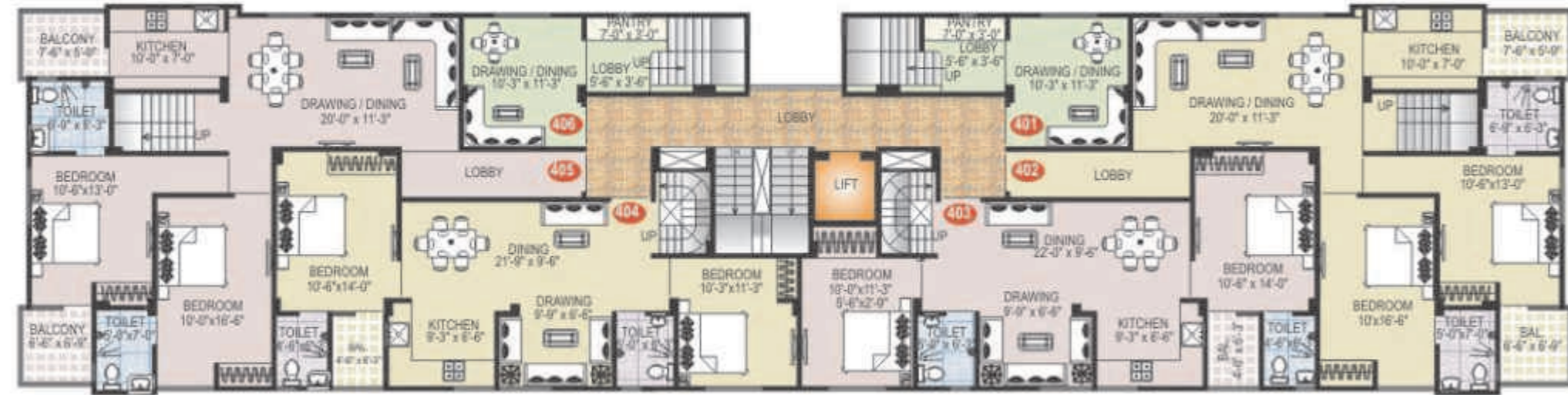
- Modern electrical system with concealed Copper Wiring
- Premium Quality Modular Switches & Accessories
- TV/Telephone/A.C./Cooler point at appropriate places
- Power backup (Silent D.G. Set) for common service

**AMENITIES**

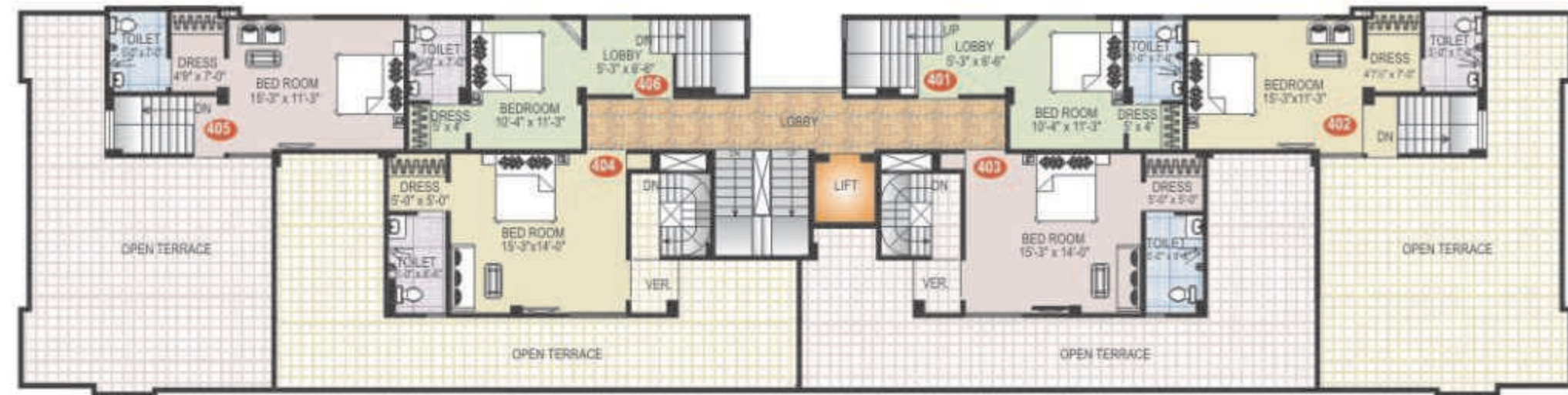
- A.C. Gymnasium & Fitness Centre
- Servant Quarters / Stores
- Landscaped Garden
- Intercom/EPBAX System
- DTH Connection with set Top box
- Power Backup
- 1 Nos. High Speed Elevator
- 24 hour water supply through own Tubewell
- 24 hour Security Service
- Well designed Entrance foyer & Lobby area
- Two Side Road
- Earthquake resistant framed structure
- Rain water harvesting system
- Planning as per vastu norms



### FOURTH FLOOR PLAN



### PENTHOUSE & TERRACE FLOOR PLAN



FLAT NO.	FLAT AREA	PENT HOUSE AREA	TOTAL AREA	TERRACE
401	295.00 sqft.	365.00 sqft.	660.00 sqft.	-----
402	1250.00 sqft.	415.00 sqft.	1665.00 sqft.	533.00 sqft.
403	1010.00 sqft.	500.00 sqft.	1510.00 sqft.	500.00 sqft.



FLAT NO.	FLAT AREA	PENT HOUSE AREA	TOTAL AREA	TERRACE
404	1000.00 sqft.	500.00 sqft.	1500.00 sqft.	490.00 sqft.
405	1250.00 sqft.	415.00 sqft.	1665.00 sqft.	533.00 sqft.
406	295.00 sqft.	365.00 sqft.	660.00 sqft.	-----

### STILT FLOOR PLAN



24 Hours Security

Well equipped Gym

DTH Service